

Local London Guiding Day



www.locallondonguidingday.com

SATURDAY 10 OCTOBER 2015
FROM 10AM

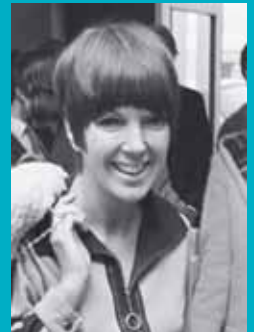
FREE WALKING TOURS



WOMEN THROUGH TIME



Join with London's specialist Local Guides for tours into the past to find the famous and infamous women who have helped shape the history of London. Walks can last up to 60 minutes and start every hour, on the hour, beginning at 10am; last walk 4pm. And they're **absolutely free!** No booking necessary – just turn up.

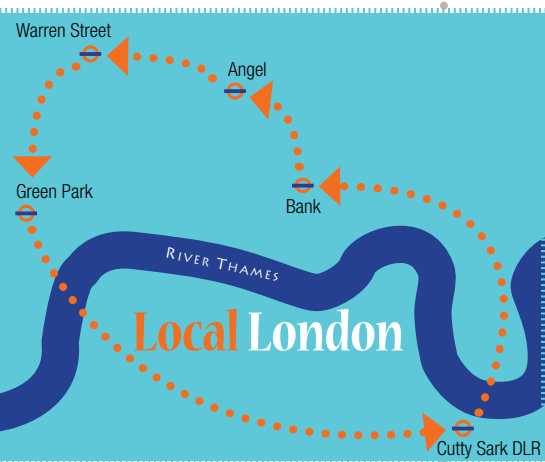


PROMOTING LONDON'S SPECIALIST LOCAL GUIDES
LOOK OUT FOR THE BADGE!

WOMEN THROUGH TIME

FREE WALKING TOURS

SATURDAY 10 OCTOBER 2015
FROM 10AM



Follow us

Facebook www.fb.com/FreeWalksLLGD
www.locallondonguidingday.com



City of London Guides

City of Stone, Women of Substance

Standing up for their beliefs and challenging the norms, these women shattered the glass ceilings of their time by being vocal, pragmatic and determined to evoke change.

● **Meet: Bank station, exit 3, Royal Exchange (Circle, Central, District, Northern, Waterloo & City and DLR) - FREE!**

www.cityoflondonguides.com



Clerkenwell and Islington Guides

Islington Women: the lives, the loves, the legacy

Islington has always been a radical and diverse area, and this is reflected in the variety of women associated with it.

Through education, art, politics and entertainment these womens' stories come alive

● **Meet: Angel station (Northern Line) - FREE!**

www.ciga.org.uk



Greenwich Tour Guides

Greenwich Women: ahead of their time

In the masculine world of Maritime Greenwich, celebrate some of the iconic and inspirational women that have stood the test

of time. Meet queens, courtesans, entrepreneurs, a witch and a pirate amid the splendour of Royal Greenwich riverside and park.

● **Meet: Cutty Sark DLR station - FREE!**

www.greenwichtours.co.uk



Westminster Guides

Westminster's Women: Inspiring, Intriguing & Influential

Royal, respectable or raffish; popular, political or powerful – women have influenced Westminster and the world. Join us as we meet some fascinating females.

● **Meet: Green Park station (Green Park exit) in the park by the drinking fountain. (Jubilee, Piccadilly and Victoria lines) - FREE!**

www.westminsterguides.org.uk



Camden Guides

Brains, beauty and bravery: Bloomsbury's Women

Discover stories of the women behind medical innovations, shocking scandals and remarkable feats. They moved in Bloomsbury's 'circles, squares and triangles' and suffered tragic loss, yet prevailed.

● **Meet: Warren Street station (Northern and Victoria lines) - FREE!**

www.camdenguides.com

Promoting London's specialist local guides
LOOK OUT FOR THE BADGE!